



“ Visualized by dentists, designed by ELSODENT ”

**ELSODENT**



March 2019

DENTAL PRODUCTS

EDITO



INNOVATION  
PERFORMANCES &  
CLINICAL FEATURES

FORMULATION WITHOUT  
ANY ADDITION OF  
HEMA, BisGMA, TEGDMA

“ Innovation, performance,  
and more biocompatibility ! ”

**For over 20 years** the French laboratory Elsodent has led the dental products industry as the premier manufacturer of more biocompatible restorative solutions, accentuating patient safety and practitioner trust. Extensive research and development programs have produced key Elsodent **innovatives solutions** with real clinical features, to satisfy requirements that practitioners need.

Since 2013, Elsodent is moving towards a **more biocompatible and eco-responsible dentistry** by launching its **BIO+** range, using **innovative formulations without any addition of TEGDMA, HEMA, BisGMA.**

These monomers have a chemical structure that makes them easily hydrolysable (degradable) by salivary enzymes, with release of highly toxic molecules in the mouth (secondary cytotoxicity). This hydrolysis occurs because their conversion rate (polymerization) oscillates between 35% and 65%. TEGDMA and HEMA release formaldehyde, BisGMA some bisphenol A. TEGDMA and BisGMA are present at a significant concentration in dental products (8 to 10% for the first, and 20 to 30% for the second). They are used in the composition of dental composites and resins. HEMA is also found in adhesives, resin cements, adhesives and liners.

Non-degradable replacement monomers, derived from our research programs or modified by our R&D department, are now preferred in our formulations. Moreover, they allow higher conversion rates (up to 70%) and keep our products **performing exceptional physical and mechanical qualities!**

Now, most of our products fit the BIOPlus specifications and are **manufactured without any addition of TEGDMA, BisGMA, HEMA.** They are easy to identify thanks to the **BIO+** logo!



ISO 13485



Sources :

- Genotoxicity and cytotoxicity of 2-hydroxyethyl methacrylate - Elzbieta pawlowska et al. - Mutation Research 696 (2010) 122-129
- Cytotoxicity of the dental composite component TEGDMA and selected metabolic by-products in human pulmonary cells - J Emler et al.
- TEGDMA and Bisphenol-A : the same level of risk in dental medicine ? - Jean-Marc Meyer - Autrement, No. 56, pages 81-86, 2010.

Dental medical devices for dental professionals only, not refunded by the Health Insurance. Carefully read the instructions on the product packaging and notices before use. Our products are manufactured by G-Pharma certified by Tüv Rheinland according to the ISO 13485 standard.

# CONTENTS

<b>COMPOSITES, ETCHING &amp; ACCESSORIES</b>	<b>5</b>
PF SEAL	6
PUREFILL FLOW	7
PUREFILL 2	8
CIRUS +	10
CIRUS FLOW	11
OPAQ	12
G-ETCH	13
HEALBOND MP	14
HEALBOND	15
ELSOBRUSH	16
<b>CORE BUILD-UP MATERIAL</b>	<b>19</b>
CORE D	20
CORE D FLOW	21
CORE D SC	24
AUTOCORE	25
FP	
<b>IMPRESSION</b>	<b>27</b>
HARMONY	28
ALGIPERF	29
ALGIPLUS	30
STILL BITE	31
DUROC	32
ELSOCORD	34
HEMOSAL	35
<b>TEMPORARY CROWNS &amp; BRIDGES</b>	<b>37</b>
PHOENIX MD	38
PHOENIX	40
<b>CEMENTS &amp; CAVITY LINER</b>	<b>43</b>
SEAL TEMP & SEAL TEMP S	44
INNOCEM	46
HEALDENT	48
HI-SEAL	49
ELSOTEMP	50
PROREZ	51
<b>IMPLANTOLOGY</b>	<b>53</b>
DUROC CLEAR	54
<b>ENDODONTIC ACCESSORIES</b>	<b>56</b>
ENDONEEDLE	
<b>MISCELLANEOUS</b>	<b>61</b>
ULTIMA	62
MIXING & INTRA-ORAL TIPS	65
NOTRE DAM	66
PRO 4	67
PROLUX	70



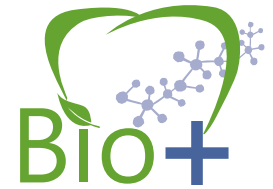
# COMPOSITES, ETCHING & ACCESSORIES

PF SEAL  
PUREFILL FLOW  
PUREFILL 2  
CIRUS +  
CIRUS FLOW  
OPAQ  
HEALBOND MP  
HEALBOND  
G-ETCH  
ELSOBRUSH

# PF SEAL

## Pits and fissures sealant

Formulation without any addition of TEGDMA, HEMA, BisGMA



### FEATURES

**Very fluid** : can reach the bottom of the thinnest fissures.

**High flexural strength** : elongation at break : > 5mm.

**Excellent conversion rate.**



**Very resistant**, less abrasion.

**Opaque with shade**, better contrast for a perfect application and a good survey.

**Easy and fast application**, etching, application and polymerization.

### INDICATIONS

Pits and fissures sealant.



#### REFERENCES & DESCRIPTION

**PFS-3,6** 2 x 1,2 ml syringes + 10 blue needle tips. Opaque white shade.

**ETL** 100 blue needle tips. Gauge 25.

MD : Class IIa certified by Tüv Rheinland (0197).

# PUREFILL FLOW

## Flowable nano-hybrid composite

Formulation without any addition of TEGDMA, HEMA, BisGMA



COMPOSITES,  
ETCHING &  
ACCESSORIES

ORE BUILD-UP  
MATERIAL

IMPRESSION

TEMPORARY BRIDGES &  
CROWNS

CEMENTS & CAVITY  
LINER

IMPLANTOLOGY

ENDODONTIC  
ACCESSORIES

MISCELLANEOUS

### FEATURES

- Biocompatibility +++.
- Conversion rate > 70%
- Highly filled.
- Thixotropic: the material does not flow and remains in place.
- Time saving: no need for a metallic matrix.
- Very resistant: flexural strength > 100 MPa.
- Ideal in conjunction with PureFill for the "Bond & Flow" technique.



### INDICATIONS

- Restoration of small classes III and classes V.
- Its perfect thixotropy and its high flexural strength, makes Purefill Flow the ideal flowable composite to fix splints after orthodontic treatments or in case of mobile teeth.
- Cavity liner in the "Bond and Flow" technique.

#### REFERENCES & DESCRIPTION

**PURF-4\*** 2 x 1,2 ml (minimum 2g) syringes + 10 tips.  
Available in VITA shades: A1/B1 - A2 - A3 - A3,5 - B2.

**IR-100** 100 pink needle tips. Gauge 18.

\* Shade MD : Class IIa certified by Tüv Rheinland (0197).

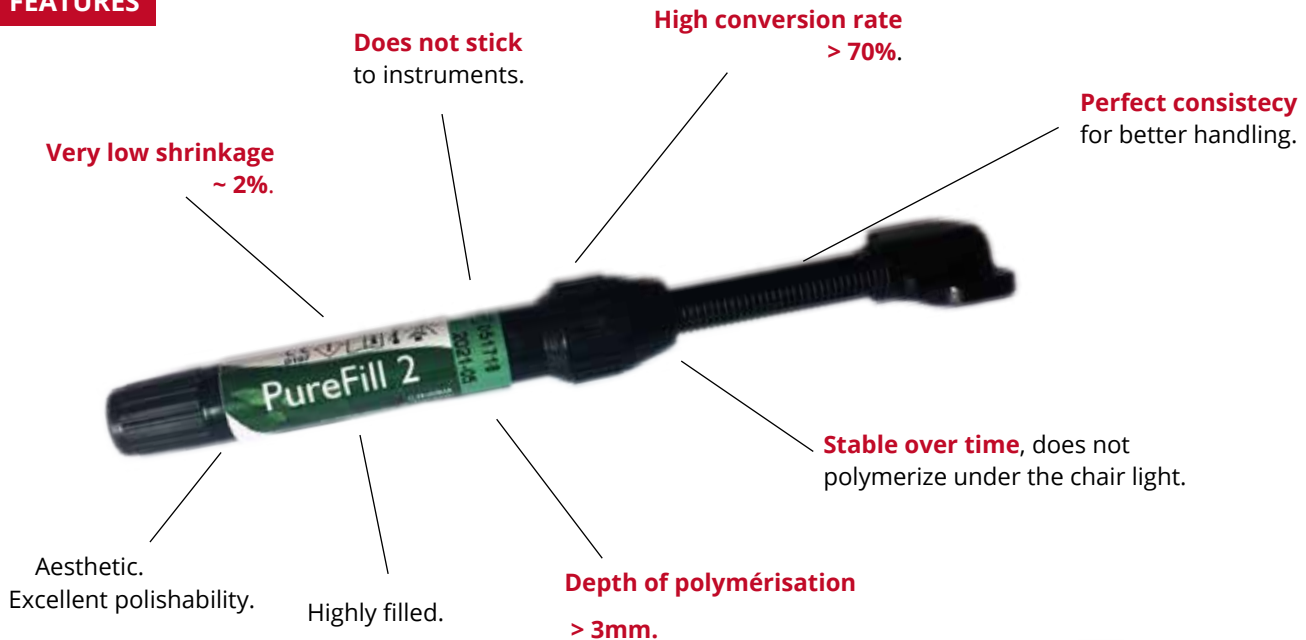
# PUREFILL 2

Nano-hybrid, antero-posterior composite

Formulation without any addition of TEGDMA, HEMA, BisGMA



## FEATURES



## INDICATIONS

- Posterior restorations (class I, class II, MOD).
- Anterior restorations (class III and class IV).
- Class V cavities.
- Aesthetic corrections (diastema, hypoplasia, discoloration).

This is the first Elsodent composite developed from an innovative formulation without any addition of BisGMA, TEGDMA, HEMA, to get a low toxicity composite. Its higher biocompatibility, due to the non-hydrolysable monomers contained in the matrix of the product, leads to a lower toxicity over time. It makes PureFill an essential product in our declared approach to public health. The results of comparison tests show the astonishing qualities of PureFill.

## REFERENCES & DESCRIPTION

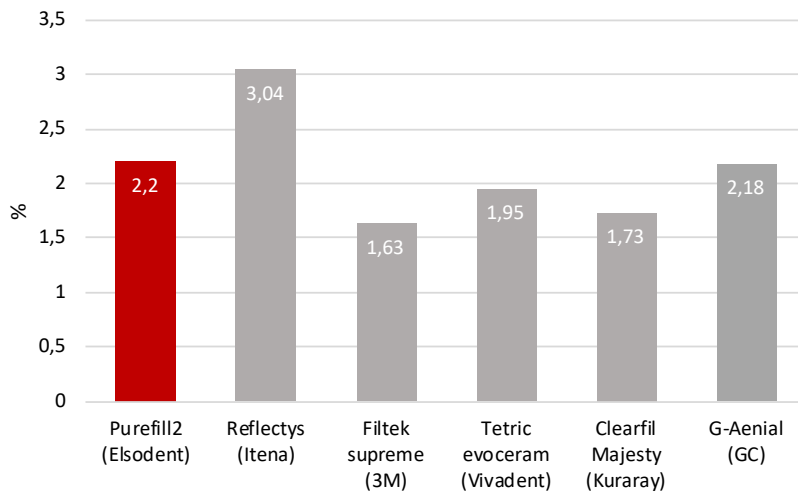
**PUR2-3\*** 3g syringe. Available in the following VITA shades: A1/B1 - A2 - A3 - A3,5 - B2.

**PUR2-5\*** 20 x 0,25g compules. Available in the following VITA shades: A1/B1 - A2 - A3 - A3,5 - B2.

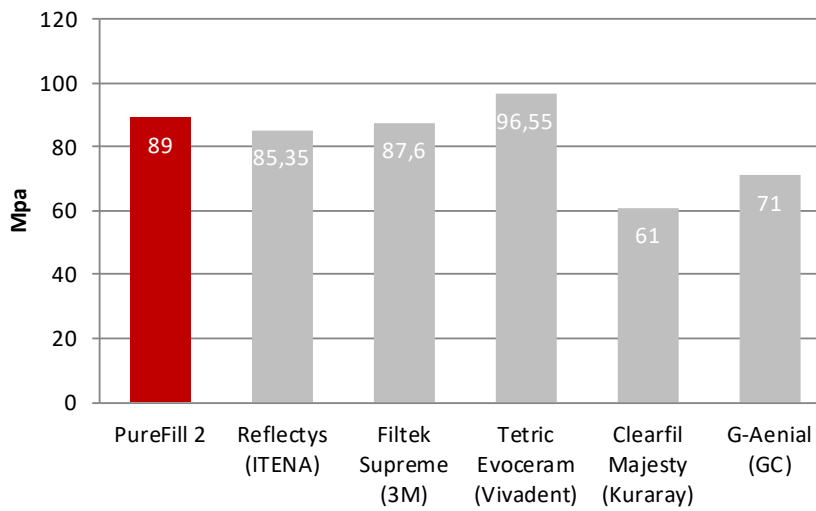
\* Shade MD : Class IIa certified by Tüv Rheinland (0197).



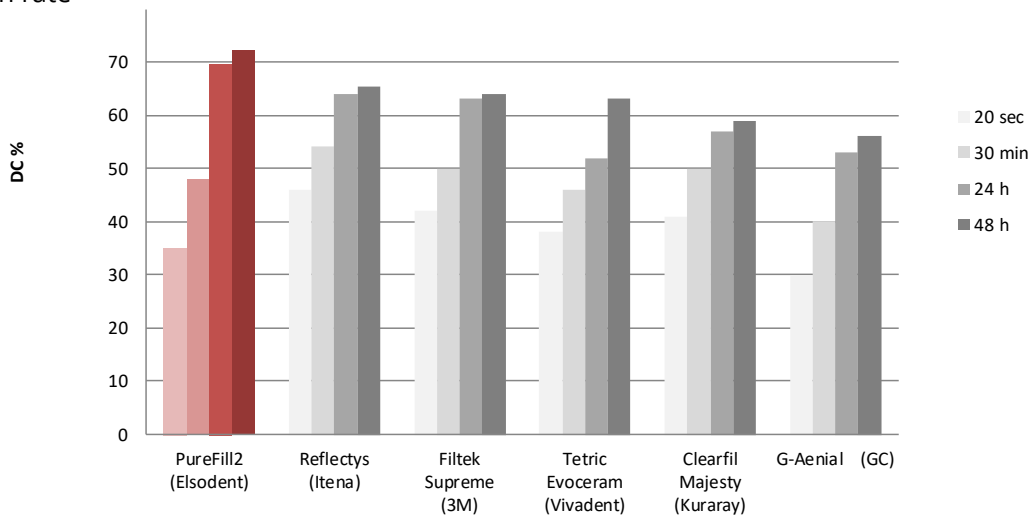
Shrinkage\*



Flexural Strength\*



Conversion rate\*



There is a clear correlation between the conversion rate (polymerization rate).of composites, their toxicity and their shrinkage during polymerization: the higher the conversion rate, the higher the shrinkage and the lower the cytotoxicity will be. Furthermore, we note that with a conversion rate above 70%, (the highest of all the products tested), the shrinkage of PureFill is still one of the lowest of all the composites sold on the market.

# CIRUS +

## Nano-hybrid, antero-posterior composite

### FEATURES

- Mimetic shades.
- Does not stick to instruments.
- Available in 11 VITA shades (syringes) and 4 VITA shades (compules).
- Highly filled.
- Radiopaque.
- Excellent polishability.



### INDICATIONS

- Anterior restorations (class III and class IV).
- Posterior restorations (class I, II and MOD).
- Class V cavities.
- Aesthetic correction (diastema, hypoplasia, discoloration).
- Composite veneers (direct method)



### REFERENCES & DESCRIPTION

<b>CIRN-4,5*</b>	1 x 4,5g syringe, available in VITA shades: A1/B1- A2 - A3 - A3,5 - A4 - B2 - B3 - C2 - C4 - D3 - Incisal.
<b>CIRN-5*</b>	20 x 0,25g compules, available in VITA shades: A2 - A3 - A3,5 - B2.
<b>CIRN-K</b>	Intro kit: 5 x 4,5g (A1/B1- A2 - A3 - A3.5 - B2) + 1 x 1,2ml Cirus flow (A3) + 1 x 1,2ml Opaq + 2 x 1,2ml etching gel + 5ml photopolymerizable bonding Healbond MP + 50 disposable applicators Elsobrush.

\* Shade MD : Class IIa certified by Tüv Rheinland (0197).

# CIRUS FLOW

Flowable micro-hybrid composite

## FEATURES

**Very resistant** : flexural strength > 100 MPa.

**Ideal in conjunction with Cirus +**, for the "Blond & Flow" technique.



**Highly filled.**

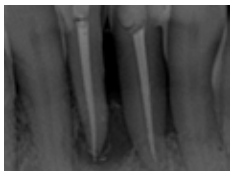
**Thixotropic**, the material does not flow and will remain in place.

**Time saving** : no need for a metallic matrix.

## INDICATIONS

- Restoration of small classes III and classes V.
- Its perfect thixotropy and its high flexural strength, make Cirus Flow the ideal flowable composite to fix fiber glass splints (mobile teeth, after orthodontic treatments).
- Cavity liner in the "Bond & Flow" technique.

## CLINICAL PROCEDURE



1. X-ray after endodontic treatment on 31 and 41.



2. Clinical view of the parodontal disease of 31 and 41.



3. Lingual clinical view of 31 and 41 treated.



4. Etching of the coronary cavities 31 and 41.



5. Setting up of a photopolymerizable bonding.



6. Application of Cirus Flow in the coronary cavities 31 and 41.



7. Photopolymerization of Cirus Flow with the brace.



8. Brace in place, flooded in the polymerized Cirus Flow.

## REFERENCES & DESCRIPTION

<b>CIR-F-4-*</b>	2 x 1,2ml (minimum 2g) syringes available in VITA shades : A2, A3, A3,5, B2 + 5 tips.
<b>CIRN-F-7,2</b>	4 x 1,2ml (minimum 2g) syringes (A2, A3, A3,5, B2) + 20 tips
<b>CIRF-7,2-*</b>	4 x 1,2ml (minimum 2g) of the same shade + 20 tips. VITA shades : A2 - A3 - A3,5 - B2.
<b>IR-100</b>	100 pink needle tips. G20.

\* Shade MD : Class IIa certified by Tüv Rheinland (0197).

# OPAQ

Light-cure opaquer

Formulation without any addition of TEGDMA, HEMA, BisGMA



## FEATURES

- Versatile in use.
- High hiding power.

## INDICATIONS

- To hide exposed metal surfaces after fracture of the ceramic layer on bridges and crowns.
- To cover the reactive dentin in deep class III, to avoid layers of composite.

### REFERENCES & DESCRIPTION

<b>OPA-2</b>	1 x 1,2ml syringe + 10 applicator tips. Available in A3 shade.
<b>LTL</b>	100 black needle tips. Gauge 20.

MD : Class IIa certified by Tüv Rheinland (0197).

# G-ETCH

High quality etching gel with an excellent contrast

Available in different packagings

## FEATURES

- Excellent balance between thixotropy and water solubility: remains in place but washes off quickly and easily.
- Non-drying, medium viscosity gel.
- Excellent contrast.



Etching of the lingual faces.

## REFERENCES & DESCRIPTION

<b>JKB-50 (Blue)</b>	"Jumbo kit" : 1 bulk pack 50ml storage syringe of 38% phosphoric acid etching gel + 5 empty 3ml delivery syringes + 40 disposable needle application tips.
<b>JKV-50 (Green)</b>	
<b>JRB-50 (Blue)</b>	Jumbo kit Refill: 1 bulk pack 50ml storage syringe of 38% phosphoric acid etching gel.
<b>JRV-50 (Green)</b>	
<b>MET-6</b>	4 x 1,5g syringes of 38% phosphoric acid etching gel + 10 needle tips. Only available in blue.
<b>LTL</b>	100 black needle tips (for Jumbo kit). G22.
<b>ETL</b>	100 blue needle tips (for Minikit). G25.

MD : Class IIa certified by Tüv Rheinland (0197).

# HEALBOND MP

Universal desensitizing self-etching light-cure bonding agent

Formulation without any addition of TEGDMA, HEMA, BisGMA



## FEATURES

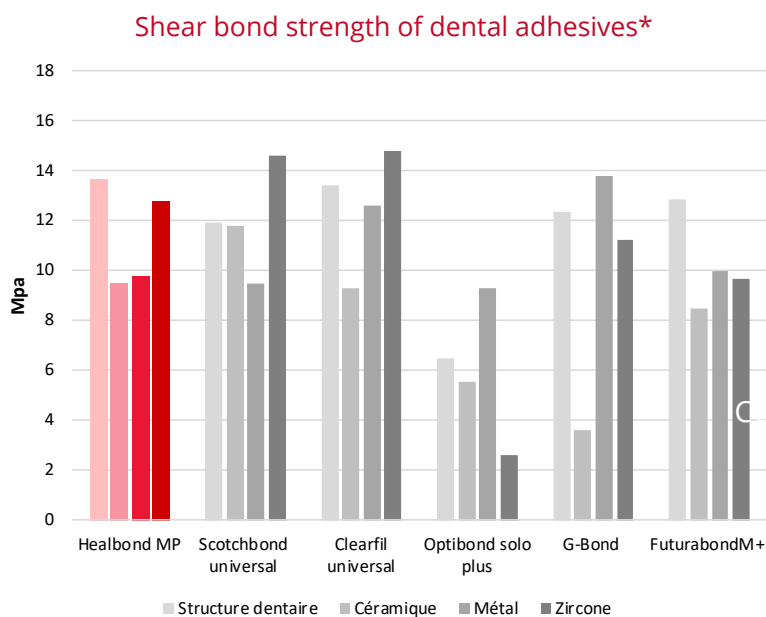
- Multi-purpose (direct and indirect restorations) and universal : excellent shear bond strength on tooth structures, ceramic, metal and Zirconia.
- Good wetting properties to be used on slightly moist dentin surfaces (wet-bonding-technique).
- Contains Benzalkonium Chloride to eliminate residual bacteria (no post-operative sensitivities).
- Releases fluoride.

## INDICATIONS

- Light-cure composites on tooth structures.
- Light-cure composites on metal (replacement of broken ceramic chips in mouth).
- Dual-curing mode (core build-up), when mixed with Healbond MP activator.

### In conjunction with INNOCEM :

- To bond ceramic veneers, root canal posts and Maryland bridges.



## REFERENCES & DESCRIPTION

<b>BMP-5</b>	5ml bottle.
<b>BMPA-5</b>	Activator for dual-curing use. 5ml bottle.

MD : Class IIa certified by Tüv Rheinland (0197).

\* Tests conducted by G-Pharma. Shear bond strength : tests carried out following the ISO 11405 norm. Conversion rate : the degree of conversion was evaluated using a FTIR spectrometer with an attenuated total reflectance (ATR) accessory. The polymerization has been conducted by an Elsodent lamp: 9mm of diameter and 600mW/cm<sup>2</sup> power at room temperature (20°C).

# HEALBOND

Light-cure bonding agent

Formulation without any addition of TEGDMA, HEMA, BisGMA



COMPOSITES,  
ETCHING &  
ACCESSORIES

ORE BUILD-UP  
MATERIAL

IMPRESSION

TEMPORARY BRIDGES &  
CROWNS

CEMENTS & CAVITY  
LINER

IMPLANTOLOGY

ENDODONTIC  
ACCESSORIES

MISCELLANEOUS

## FEATURES

Releases fluoride.

Good wetting properties to be used on slightly moist dentin surfaces (wet-bonding-technique).

Shear bond strength :  
~ 12,9 MPa.

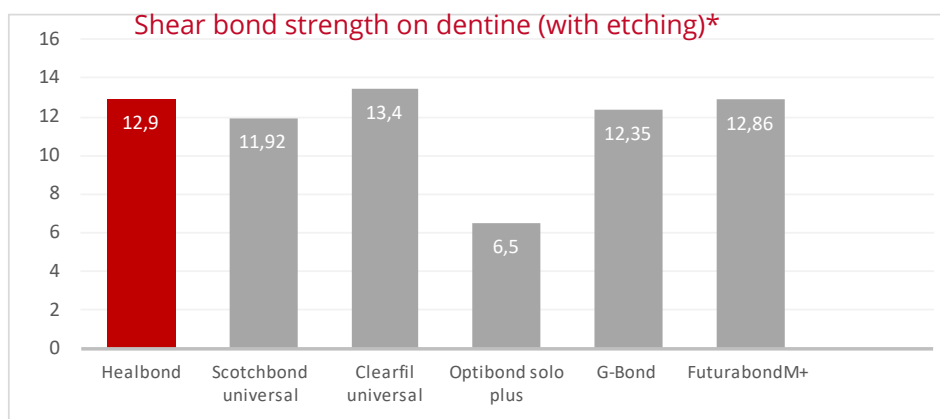
Contains Benzalkonium Chloride to eliminate residual bacteria (no post-operative sensitivities).

High conversion rate :  
65% in 20sec.



## INDICATIONS

- Light-cure composites on tooth structures.
- To desensitise cervical regions and free dentin areas.
- Dual-curing mode (core build-up), when mixed with Healbond activator.



### REFERENCES & DESCRIPTION

**B-5** 5ml bottle.

**BA-5** Activator for dual-curing use. 5ml bottle.

MD : Class IIa certified by Tüv Rheinland (0197).



\* Tests conducted by G-Pharma. Shear bond strength : tests carried out following the ISO 11405 norm. Conversion rate : the degree of conversion was evaluated using a FTIR spectrometer with an attenuated total reflectance (ATR) accessory. The polymerization has been conducted by an Elsodent lamp: 9mm of diameter and 600mW/cm<sup>2</sup> power at room temperature (20°C).

# ELSOBRUSH

## Disposable dental applicators for accurate application

### FEATURES

- Stiff head for a good and precise scrubbing of dental surfaces.
- Stronger working end will bend anywhere to fit any teeth, even those which are hard to reach, with better control.
- Pointed other end can be used to pierce unidose of bonding agent.
- Wide diameter of the shaft gives better grip, even with wet gloves.
- 3 different sizes fit any technique and adapt to any type of material used.
- Different colours to identify different materials during clinical procedures.
- Specially designed dispensing box will deliver applicators one by one, to avoid cross-contamination.
- A strongly-built, stable and well-designed dispenser is available for frequent use of applicators.





## INDICATIONS

To apply cements, etchants, sealants, bonding agents, hemostatic solutions, cleansing solutions, conditioner, etc.



### REFERENCES & DESCRIPTION

<b>400EC</b>	4 x 100 applicators (regular size).
<b>400EF</b>	4 x 100 applicators (fine size).
<b>400EXF</b>	4 x 100 applicators (Xfine size).
<b>400ECD</b>	4 x 100 applicators (regular) + dispenser
<b>400EFD</b>	4 x 100 applicators (fine) + dispenser
<b>400EXFD</b>	4 x 100 applicators (Xfine) + dispenser

MD : Class I.

Other references available on request.



# CORE BUILD-UP MATERIAL

CORE D  
CORE D FLOW  
CORE D SC  
FP  
AUTOCORE

# CORE D

## Dual-curing core build-up material

Formulation without any addition of HEMA, TEGDMA

### FEATURES

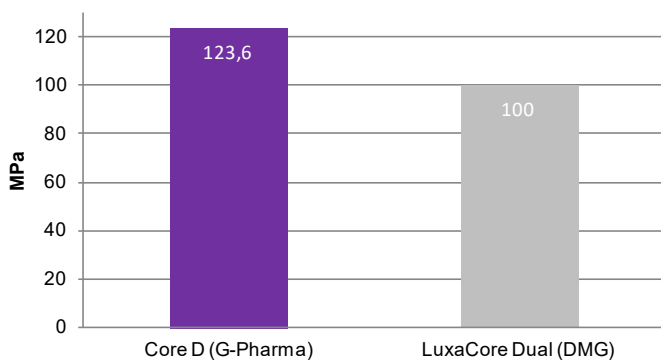
- Very thixotropic: the material does not flow and remains in place without the need for a matrix. This dramatically improves the vision of the operating field.
- Equivalent hardness to dentin. The operator does not feel the difference when the bur moves from the tooth structures to the material.
- High flexural strength (> 120 MPa).
- High compressive strength.
- Also designed to seal root canal posts with a dual-curing bonding.
- Radiopaque.

### INDICATIONS

- Core built-up on non-vital teeth.



### FLEXURAL STRENGTH\*



\* Flexural Strength tests were conducted by G-Pharma according to ISO 4049 and carried out with a Zwick equipment.

### REFERENCES & DESCRIPTION

<b>CDB-25</b> (white)	25ml cartridge + 20 mixing tips + 20 intra-oral tips.
<b>CDD-25</b> (dentin)	25ml cartridge + 20 mixing tips + 20 intra-oral tips.
<b>EJ-100</b>	100 yellow mixing tips.
<b>IJ-100</b>	100 yellow intra-oral tips.
<b>IV-50</b>	50 green intra-oral tips.

MD : Class IIa certified by Tüv Rheinland (0197).



# CORE D FLOW

## Dual-curing core build-up material

Formulation without any addition of HEMA, TEGDMA

### FEATURES

**Flowable**, to allow injection in small and narrow cavities.

Sealing of root canal post with dual-curing bonding system.



**High flexural strength**, 125 MPa.

**Equivalent hardness to dentin**, the operator does not feel a difference when the bur moves from the tooth structures to the material.

### INDICATIONS

- Core built-up on non-vital teeth.
- As a composite on root canal around the posts.

#### REFERENCES & DESCRIPTION

**CDF-5** (dentin) 2 x 2,5ml syringes + 10 mixing tips + 5 intra-oral regular tips + 5 intra-oral x-fine tips.

MD : Class IIa certified by Tüv Rheinland (0197).

# CORE D SC

**Self-curing core build-up material**

Formulation without any addition of HEMA, TEGDMA

**NEW AUTOCORE MIX**



## FEATURES

- Very thixotropic: the material does not flow and remains in place without the need for a matrix. This dramatically improves the vision of the operating field.
- Fast setting time: 55 seconds.
- Self-curing for a minimal shrinkage of the material.
- High compressive strength.
- High flexural strength min.: 120 MPa.
- Radiopaque.

## INDICATIONS

- Core built-up on non-vital teeth.

## CLINICAL PROCEDURE

Core build-up restoration on an upper PM, in conjunction with a FP fiber post



1. Endodontic treatment completed, root canals sealed.



2. Preparation of the root canal with a suitable reamers, accordingly with the anatomy of the root.



3. Preparation completed.



4. Choice of the suitable posts - Try-in-application of a conditioner on the posts and cavity (if necessary).



5. Application of HEALBOND DUO SE on the post, canal walls and the cavity, application of CORE D SC on the post.



6. Gently insert the posts into the root canal. Polymerization starts immediately.



7. Apply CORE D SC around the posts and onto the inner surfaces of the preparation.



8. Restoration completed, Preparation of the abutment tooth can start.



9. Preparation completed. Abutment tooth ready for impression.

### REFERENCES & DESCRIPTION

<b>CDSCB-25</b> (white)	1 x 25ml cartridge + 20 mixing tips + 20 intra-oral tips.
<b>CDSCD-25</b> (dentin)	
<b>CDSCB-50</b> (white)	1 x 50ml cartridge + 20 mixing tips + 20 intra-oral tips.
<b>CDSCD-50</b> (dentin)	
<b>EJ-100</b>	100 yellow mixing tips.
<b>IV-50</b>	50 green intra-oral tips.

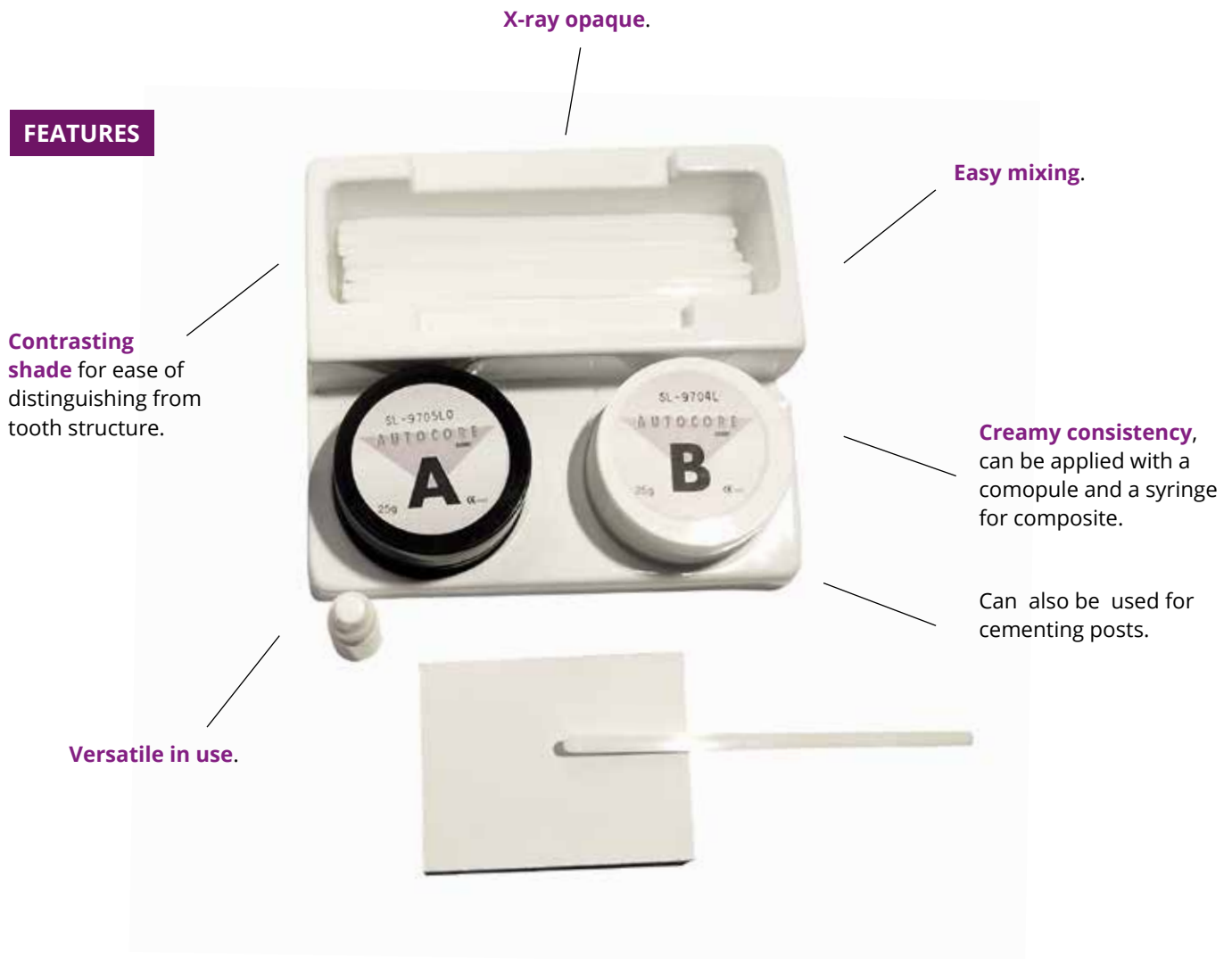
MD : Class IIa certified by Tüv Rheinland (0197).





# AUTOCORE

## Core build-up material



### FEATURES

**Contrasting shade** for ease of distinguishing from tooth structure.

X-ray opaque.

Easy mixing.

**Creamy consistency**, can be applied with a compule and a syringe for composite.

Can also be used for cementing posts.

Versatile in use.

### PHYSICAL PROPERTIES & CHARACTERISTICS OF THE MATERIAL

- Working time: minimum 160 seconds.
- Setting time: minimum 240 seconds.
- Compressive strength: 250 MPa.
- Diametral tensile strength: 41 MPa.

### INDICATIONS

- For core build-up of tooth missing coronal structure, before crowns or bridges set up.
- Kit supplied with 3ml fluid resin for sealing of root posts (metal, carbon, fiberglass, etc.); to be used with proper gluing system.

### REFERENCES & DESCRIPTION

**AC-50** 25g (base) + 25g (catalyst), 40 spatulas, 3g bottle of thinner resin. Dentin shade.

MD: Class IIa certified by Tüv Rheinland (0197).



# FP

## Root canal fiber posts



### FEATURES

- Individual blister: no cross-contamination and easy selection.
- Translucent: aesthetic and good light conduction.
- Compatible with all resin-based cements.
- Rough surface: exceptional cohesion with the composite and/or the cement.
- Elasticity modulus close to that of the tooth: homogeneous repartition of the mechanical stress.
- Length of the posts: 19 mm.
- Colour code on top of the post.
- Biocompatible: no toxicity.
- No corrosion or tooth structure discoloration.

### DESCRIPTION

FP Fiber Posts are cylindrical posts with a conical end for the last 2 mm.

### COMPOSITION

- Organic matrix: 40%.
- Glass fibers: 60%.

### INDICATIONS

To re-inforce the non-vital tooth structure.

#### REFERENCES & DESCRIPTION

<b>KFP-15</b>	Intro kit of 3 x 5 posts (1,00mm - 1,20mm - 1,35mm), under individual blister + 3 assorted drills.
<b>FP-5-*</b>	Refill of 5 posts of the same size, under individual blister.
<b>F-3-*</b>	Refill of 3 drills of the same size.

\* Size MD : Class IIa certified by Tüv Rheinland (0197).



# IMPRESSION

HARMONY  
ALGIPERF  
ALGIPLUS  
STILL BITE  
DUROC  
ELSOCORD  
HEMOSAL

# HARMONY

## Vinyl polyxilane impression materials

### FEATURES

- Harmony has been specially developed to provide a very precise and highly hydrocompatible impression material.
- Both light and medium viscosity are thixotropic : they don't start to flow until the putty is in place. That improve patient comfort and insure an accurate and "easy to take" impression.
- High compressive strength.
- Good dimensional stability.
- Excellent coverage after distorsion.
- Unlike many other impression materials, an impression made with Harmony has a matte appearance which allows a perfect and fast reading and gives the opportunity to correct the impression right away, if needed.



### INDICATIONS

Harmony impression material is available in the following viscosities and setting times :

- Low viscosity, regular setting (green) for the two steps impression (wash technique).
- Low viscosity, fast setting (orange) for the two steps impression (wash technique).
- Medium viscosity, regular setting, f or the "one step" impression procedure.
- Putty soft, regular setting (yellow).
- Putty soft, fast setting (blue).

### REFERENCES & DESCRIPTION

<b>HPN-600</b>	Putty soft, regular setting 2 x 300ml (base and catalyst).
<b>HPF-600</b>	Putty soft, fast setting 2 x 300ml (base and catalyst).
<b>HM-100</b>	Medium viscosity, regular setting - 2 x 50ml cartridges + 10 mixing tips.
<b>HM-200</b>	Medium viscosity, regular setting - 4 x 50ml cartridges
<b>HLN-100</b>	Low viscosity, regular setting - 2 x 50ml cartridges + 10 mixing tips.
<b>HLN-200</b>	Low viscosity, regular setting - 4 x 50ml cartridges
<b>HLF-100</b>	Low viscosity, fast setting - 2 x 50ml cartridges + 10 mixing tips.
<b>HLF-200</b>	Low viscosity, fast setting - 4 x 50ml cartridges
<b>EJ-100</b>	100 yellow mixing tips.
<b>IJ-100</b>	100 Intra-oral tip for EJ-100 and EBA-100.
<b>IV-50</b>	50 Intra-oral tip

MD : Class I.

# ALGIPERF

## Class A type I dental alginate

### FEATURES



**Anti-microbial:** no need to decontaminate the impression before sending to the lab.

**Mint flavour.**

**Excellent elasticity:** no tear off and very good recovery after deformations.

**Dust-free.**

**Dark green colour** for a good contrast to allow fast and precise reading of details.

### PHYSICAL PROPERTIES & CHARACTERISTICS OF THE MATERIAL

- Fast setting time alginate.
- High precision: 20  $\mu$ .
- Working time: 1 min 45 s.
- Setting time in mouth: ~ 30 s.
- Suitable with all plasters.
- Follow standards: ISO 1563.

### DIMENSIONAL STABILITY

- The impression can be kept for 7 days in an sealed plastic bag.

### IMPORTANT NOTICE

- Working and setting times are closely related to water temperature.



### REFERENCES & DESCRIPTION

**AA-500**

500g bag. Dark green.

MD : Class I.

COMPOSITES,  
ETCHING &  
ACCESSORIES

ORE BUILD-UP  
MATERIAL

IMPRESSION

TEMPORARY BRIDGES &  
CROWNS

CEMENTS & CAVITY  
LINER

IMPLANTOLOGY

ENDODONTIC  
ACCESSORIES

MISCELLANEOUS

# ALGIPLUS

## Class A type I dental alginate



### FEATURES

- Anti-microbial alginate: no need to decontaminate the impression before sending it to the laboratory.
- Dark purple colour for a good contrast to allow an easy and fast reading of the impression.
- Dust-free.
- Excellent elasticity: no tear off wand very good recovery after deformations.
- Thixotropic: remains in the tray without leaking and gives perfect covering of teeth during printing.
- Mint flavour.

### PHYSICAL PROPERTIES & CHARACTERISTICS OF MATERIAL

- Very good precision: 50  $\mu$ .
- Working time: 1 min 45 s.
- Setting time in mouth: ~ 30 s.
- Suitable with all plasters.

### DIMENSIONAL STABILITY

- The impression can be kept for 4 days in an sealed plastic bag.

### IMPORTANT NOTICE

- Working and setting times are closely related to water temperature.



### REFERENCES & DESCRIPTION

**AP-500** 500g bag. Dark purple.

MD : Class I.



# STILL BITE

Bite registration silicone, fast set and high shore hardness

## FEATURES

- Thixotropic.
- Easy to trim.
- Very hard  
(hardness : 95 shore A).



Dimensional variation : ~ 0,02%.

Indiscernible viscosity for the patient.

Can be scanned with a laser/ optical/ tactile lecture system.

## CHARACTERISTICS

- Bite registration, in dentistry and orthodontics.
- Occlusion keys.
- Gnatological evaluations.
- Intermaxillary bite registration: centric, protrusion or lateral.
- Diagnostic assessments of crano-mandibular disorders needing afterward an interpretation with a CAO system.

## CLINICAL PROCEDURE (BITE REGISTRATION)



1. After a slight air-blow, apply enough material to obtain a perfect bite registration



2. Bite registration



3. View of the bite registration segment after complete Polymerization

## REFERENCES & DESCRIPTION

<b>SB-100</b>	2 x 50ml cartridges + 10 mixing tips.
<b>SB-200</b>	4 x 50ml cartridges.
<b>EV-100</b>	100 green mixing tips.

MD : Class I.

# DUROC

**Resin-based bite registration material,  
implant transfer caps splinting**

Formulation without any addition of HEMA, TEGDMA, Bis GMA



## FEATURES

- Duroc has been developed from a mix of special resins to give one of the most rigid bite registration materials available.
- High flexural strength.
- Negligible linear shrinkage.
- Thixotropic: does not flow between teeth.
- Burn with no residue.
- Reduced exothermic reaction when setting.
- Fast setting time: ~ 40 seconds.
- Blue for a strong contrast.
- Easy to trim the excess.



## INDICATIONS

- Fixing together implant transfer caps before final impression.
- Bite registration, especially when the centric relation is unstable.

## OTHER INDICATIONS

- To quickly and perfectly fix the two parts of a bridge infrastructure.
- To elaborate inlays cores in direct method.

## CLINICAL PROCEDURE



1- Implant transfers in place before impression.



2 - The setting of Duroc is finished, giving free access to screws.



3 - Fitting.



4- Impression made with the implant transfers.



5 - Replicas are in place (not screwed yet).



1 & 2 - Bite registration.

## REFERENCES & DESCRIPTION

<b>DU-50</b>	50ml cartridge + 10 mixing tips.
<b>EJ-100</b>	100 yellow mixing tips.

MD : Class IIa certified by Tüv Rheinland (0197).

# ELSOCORD

## Knitted retraction cord



### FEATURES

- 100% cotton cord is knitted into interlocking chains: to facilitate easy packing of cord into sulcus.
- Knitted loops absorb and transport significantly greater quantities of hemostatic solution or gel providing more effective hemostasis.
- For quick and easy identification the 3 sizes are colour-coded.
- Knitted chains provide an excellent medium for gel absorption and placement.

### CHARACTERISTICS

- **Size 000:**
  - To be used when the sulcus is very narrow and shallow.
- **Size 00:**
  - To be used when the sulcus is narrow and shallow.
  - To be used for the impression technique with double cords. The 00 is placed at the bottom of the sulcus first
- **Size 0:**
  - To be used when the sulcus is narrow.
  - To be used when the gum is thin.
  - To be used for an impression of mandibular incisors.
- **Size 1:**
  - To be used with a thick gum and when the sulcus is deep.
  - To be used for impressions of other dental sectors.

#### REFERENCES & DESCRIPTION

<b>C-000</b>	Size 000	Bottle with 260cm of cord.
<b>C-00</b>	Size 00	
<b>C-0</b>	Size 0	
<b>C-1</b>	Size 1	

MD : Class I.

# HEMOSAL

Astringent gel - 25% aluminum sulfate



## FEATURES

- Thixotropic gel: easy, precise and fast setting.
- Due to its balance viscosity, the gel remains in place during the procedure
- No tissue necrosis or blackening of tissue.
- Versatile in use.
- Blue colour for better visibility and placement.
- No contra-indications.

## INDICATIONS

- In restorative dentistry: conditioning of the injured gum during the preparation of juxta-gingival class V cavities, to avoid discoloration of the definitive composite restoration.
- Prosthetic preparation: to allow a non-traumatic and optimal retraction of the gum. Apply the gel in the sulcus and insert the retraction cord.
- In endodontic procedures: when a canal is bleeding.

## TIPS



## REFERENCES & DESCRIPTION

<b>HSA-6</b>	4 x 1,5g / 1,2g syringes + 10 black needle tips.
<b>LTL</b>	100 intra-oral black tips.

MD : Class IIa certified by Tüv Rheinland (0197).

COMPOSITES,  
ETCHING &  
ACCESSORIES

ORE BUILD-UP  
MATERIAL

IMPRESSION

TEMPORARY BRIDGES &  
CROWNS

CEMENTS & CAVITY  
LINER

IMPLANTOLOGY

ENDODONTIC  
ACCESSORIES

MISCELLANEOUS







# TEMPORARY CROWNS & BRIDGES

PHOENIX MD  
PHOENIX

# PHOENIX MD

## Resin for temporary bridges and crowns

Formulation without any addition of HEMA and TEGDMA

### FEATURES

**Perfect thixotropy :**  
does not flow and can be injected directly into the mouth around the abutment tooth.

A new layer can be applied on top of an existing one up to 2 to 3 days after, maximum.



High flexural strength and slight resilience.

Very thin oxygen inhibition layer.

### INDICATIONS

- To make temporary crowns and long temporary bridges, with a pre-impression (indirect method). Due to its high consistency, it is suitable to inject some resin in the sulcus of the preparation, prior to put the resin-filled impression back in the mouth.
- To make temporary crowns directly in mouth (direct method). A temporary crown can be made in mouth within 3 minutes maximum.

#### REFERENCES & DESCRIPTION

<b>PHMD-A1-50</b>	1 x 50ml cartridge, shade A1 + 10 mixing tips.
<b>PHMD-A2-50</b>	1 x 50ml cartridge, shade A2 + 10 mixing tips.
<b>PHMD-A3-50</b>	1 x 50ml cartridge, shade A3 + 10 mixing tips.
<b>EJ-100</b>	100 yellow mixing tips.

MD : Class IIa certified by Tüv Rheinland (0197).

**INDIRECT METHOD**

- Inject PHOENIX MD in the pre-impression. Check that the nose of the mixing tip is always in contact with the bottom of the pre-impression, to avoid bubbles in the material.
- For incisives, use an intra-oral tip to be able to reach the bottom part of the impression.
- Also use an intra-oral tip to inject resin in the sulcus of the tooth, prior to putting back in the mouth the pre-impression loaded with resin, to get a perfect temporary crown.
- **Important notice:** do not forget to withdraw the loaded impression from the mouth, after 1 minute maximum: the resin will be still in a plastic phase (soft) and it will not be blocked by the adjacent teeth. The material will recover after deformation.
- Wait for the resin to set completely in the impression, out of the mouth.
- Take the impression out of the mouth and eliminate the oxygen inhibition layer with a disinfection wipe or with a tissue impregnated with alcohol. This layer is always present in the 2 components resin products. Trim the excess with a diamond bur without water spray



1. Teeth prepared. 2. Injection of PHOENIX MD in the pre-impression. 3. Temporary bridge in the impression. 4. Temporary bridge outside the impression. 5. Temporary bridge finished and polished.

This type of resin is very hard and the use of a laboratory bur for resin is not recommended.

**DIRECT METHOD**

- Keep the prepared abutment tooth slightly humid. Put a yellow ring mixing tip and an intra-oral tip on the cartridge and inject PHOENIX MD directly onto the teeth, starting in the sulcus.
- Once, the tooth is completely covered, ask the patient to bite on the uncured resin.
- After about 40 seconds, the resin reaches an elastic phase. Ask the patient to open wide and take the untrimmed temporary crown off the tooth and put it back a few times, to avoid any blocking with adjacent teeth.
- Trim the excess in the mouth, using a diamond bur, under water spray.
- Trim the proximal walls outside of the mouth.
- Polish the crown. Seal it with a temporary luting cement.



1. 35 and 36 prepared. Impression completed. 2. Injection of PHOENIX MD starting by the sulcus. 3. Look of the temporary crowns after bite registration and polymerization. 4. Sculpture directly in the mouth with a diamond bur. 5. Temporary crowns finished and polished.

# PHOENIX

Resin for temporary bridges and crowns

Formulation without any addition of HEMA and TEGDMA



## FEATURES

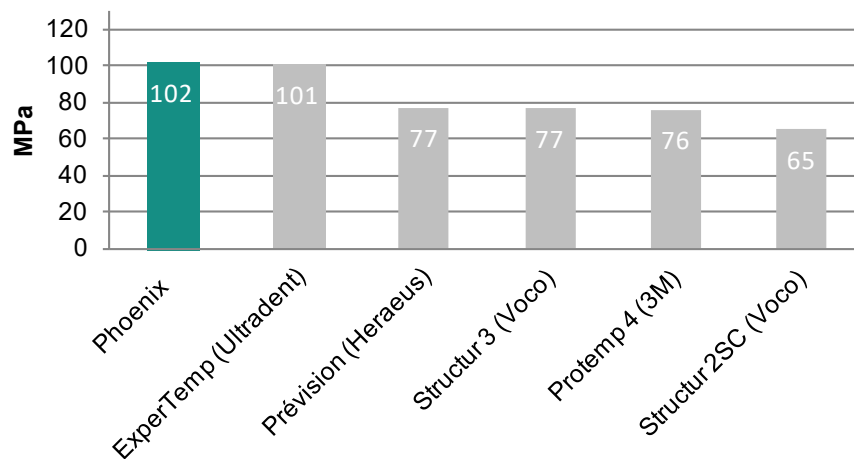
- High flexural strength > 100 MPa.
- Extremely reduced inhibition oxygen layer: the surface of the cured material is almost dry.
- Easy and fast to use.
- Aesthetic.

## INDICATIONS

- To make temporary crowns and long temporary bridges, with a pre-impresion (indirect method).



## Flexural strength \*



### REFERENCES & DESCRIPTION

<b>PH-50-A1</b>	50ml cartridge, shade A1 + 10 mixing tips.
<b>PH-50-A2</b>	50ml cartridge, shade A2 + 10 mixing tips.
<b>PH-50-A3</b>	50ml cartridge, shade A3 + 10 mixing tips.
<b>EB-100</b>	100 blue mixing tips.

MD : Class IIa certified by Tüv Rheinland (0197).

\* These tests were carried out with a Zwick equipment, according to ISO 11405.



# CEMENTS & CAVITY LINER

SEAL TEMP, SEAL TEMP S  
INNOCEM  
HEALDENT  
HI-SEAL  
ELSOTEMP  
PROREZ

# SEAL TEMP & SEAL TEMP S

## Temporary resin-based cements

Formulation without any addition of HEMA, TEGDMA, Bis GMA



### FEATURES

#### Perio-friendly

- Due to the smooth texture of the cement, the gum completely heals within 2 to 3 days.
- Any procedure (impression, etc) can be performed without haemostatic problems.

#### Time saving

- The cement sticks to the intrados of the temporary crowns:
  - The prepared teeth always remain clean.
- Before putting the temporary crown back on the tooth:
  - For SEAL TEMP, just apply a new layer of cement. If a supra-occlusion occurs, just trim the external surface of the temporary crown.
  - For SEAL TEMP S, remove the old layer of cement with tweezers, prior to applying a new one.
- Both versions are suitable for vital teeth.



### INDICATIONS

#### SEAL TEMP - Strong retention strength.

- Temporary bridges and crowns on low abutment teeth.
- Long-term temporary crowns (2-3 months).
- Definitive cementation of crowns on implant, except prosthetics elements in Zirconia.

#### SEAL TEMP S - Classic retention strength.

- Temporary bridges and crowns on normal abutment teeth and implants.
- Temporary cementation of definitive veneers to valid the aesthetic.

## CLINICAL PROCEDURE



1. Temporary bridge (try-in).



2. Injection of the cement in the temporary bridge.



3. Luting of the temporary bridge.



4. Temporary bridge sealed. Excess cement eliminated. Occlusion checked.

### Dual syringe form

1. Before first use, take the cap off and check that the two exits are unblocked. Extrude a little bit of cement to be sure that the 2 parts equally flow. Put a mixing tip on.
2. Extrude the desired quantities and apply a thin layer in the intrados of the temporary crown.
3. The crown or bridge should be firmly held in place, by asking the patient to bite.
4. Eliminate the excess immediately by spreading them on the temporary crown, with a mouth spatula, to obtain a smooth joint. The cement is totally hard after 1 minute.
5. Check the occlusion with articulating paper.
6. Leave the mixing tip in place until the next use.

### 2 syringes form

1. Take the caps off and extrude the desired equal quantities of base and catalyst from the 2 syringes onto a mixing pad. Put the caps back in place.
2. Mix the 2 pastes with a mouth spatula (10 s.) and apply a thin layer of cement in the intrados of the temporary crown.
3. The crown should be firmly held in place, by asking the patient to bite.
4. Eliminate the excess immediately by spreading them on the temporary crown, with a mouth spatula, to obtain a smooth joint. The cement is totally hard after 1 minute.
5. Check the occlusion with articulating paper.



### SEAL TEMP

#### REFERENCES & DESCRIPTION

<b>ST-25</b>	2 x 12,5g syringes (base + catalyst).
<b>STD-16</b>	2 x 5ml dual syringes + 20 mixing tips.
<b>STD-8</b>	1 x 5ml dual syringe + 10 mixing tips.
<b>EM-100</b>	100 Brown mixing tips.

MD : Class IIa certified by Tüv Rheinland (0197).

### SEAL TEMP S

#### REFERENCES & DESCRIPTION

<b>STS-25</b>	2 x 12,5g syringes (base + catalyst).
<b>STDS-16</b>	2 x 5ml dual syringes + 20 mixing tips.
<b>STDS-8</b>	1 x 5ml dual syringe + 10 mixing tips.
<b>EM-100</b>	100 Brown mixing tips.

# INNOCEM

Self-adhesive universal permanent resin cement

Formulation without any addition of HEMA, TEGDMA, Bis GMA



## FEATURES

### Fast and easy to use.

- Strong adhesion to dentin, metal, Zirconia, composite and etched (or silanated) ceramic. No pre-treatment required in most case. To cement etched ceramic veneers, Maryland bridges and posts, the tooth structures must be etched and the use of Healbond MP in conjunction with InnoCem is strongly recommended.
- Highest conversion rate on the market: 58,40% at 30mn: **less primary toxicity.**
- HEMA, TEGDMA, Bis GMA and BPA-free : **less secondary toxicity.**
- High flexural strength: 90 MPa.
- After 5 seconds of Polymerization, the excesses remain slightly rubbery to be easily removed.
- Due to its strong hiding power, associated to an extreme opacity, the opaque versions of InnoCem are the best choices for cementation of aesthetic prosthetics elements on implant abutments, or on metallic elements such as inlay core and amalgams.
- Good balance between hydrophobia for a long-term and stable adhesion, and a slight hydrophilia before polymerization to allow InnoCem to chemically bond to collagen fibers and phosphate ions, when used on vital teeth.
- Waterproof and stability over time: no post-operative sensitivities.
- Easy to handle: dual syringe for a perfect dosage and intra-oral fine or xfine tips to facilitate the placement inside the mouth in the intrados of prosthesis or directly into the root canal.

## INDICATIONS

- Metal, composite, etched (or silanised ceramic) inlays, onlays, crowns and bridges.

### In conjunction with Healbond MP:

- Maryland bridges of 2 to 3 elements.
- Etched (or silanised) ceramic veneers.
- Root canal posts (metallic or fiber posts).

## IMPORTANT NOTICE

In case of low abutment teeth an etching prior to cementation will improve the adhesive strength of InnoCem.

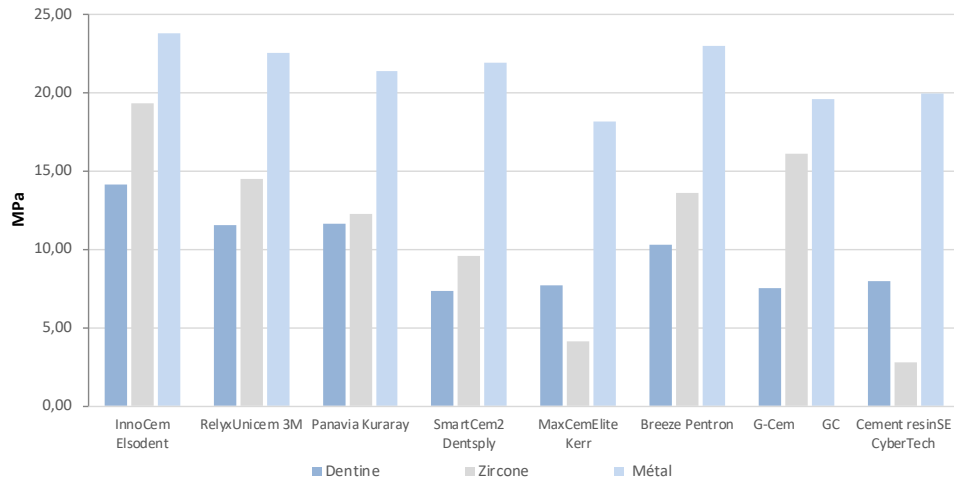
### REFERENCES & DESCRIPTION

<b>iC-10 -TA2</b>	1 x 5ml + 10 mixing tips + 10 regular intraoral tips. Translucent A2 shade.
<b>iC-10-OA2</b>	1 x 5 ml + 10 mixing tips + 10 regular intraoral tips. Opaque A2 shade.
<b>iC-10-OA3</b>	1 x 5 ml + 10 mixing tips + 10 regular intraoral tips. Opaque A3 shade.
<b>EB-100</b>	100 blue mixing tips.

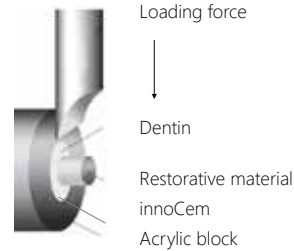
MD : Class IIa certified by Tüv Rheinland (0197).

# TESTS RESULTS & COMPARISON

## Shear bond strength\*



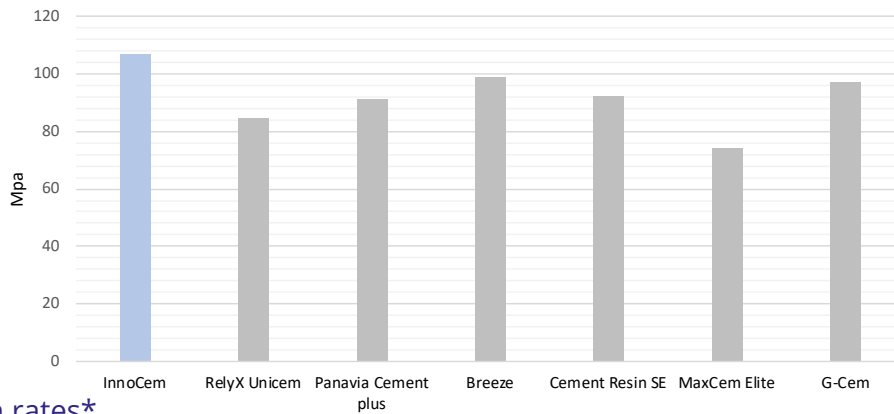
### Schematic of shear bond strength test\*



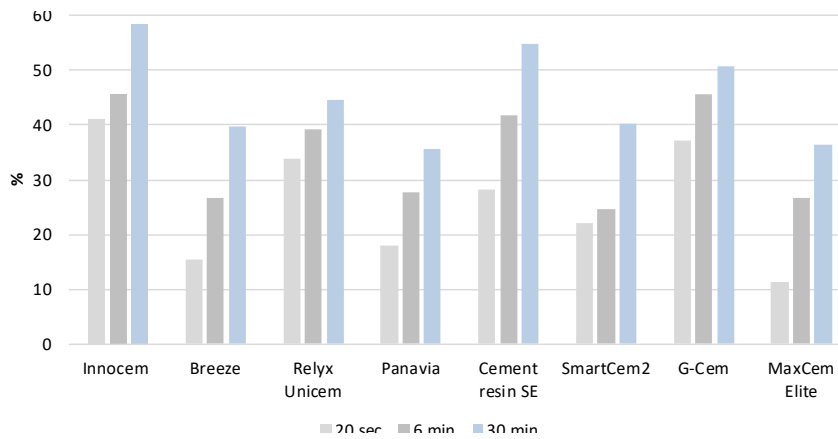
### Excellent adhesion to :

- Dentin: 14,10 MPa.
- Zirconia: 19,3 MPa.
- Metal: 23,81MPa.

## Flexural strength\*



## Conversion rates\*



\* Tests conducted by G-Pharma. according to the norms: Flexural Strength according to ISO 4049 and carried out with a Zwick equipment. The Degree of conversion was evaluated using FTIR spectrometer with an attenuated total reflectance (ATR) accessory. Shear bond strength according to the norms ISO 11405 and carried out with a Zwick equipment.

COMPOSITES, ETCHING & ACCESSORIES  
 CORE BUILD-UP MATERIAL  
 IMPRESSION  
 TEMPORARY BRIDGES & CROWNS  
 CEMENTS & CAVITY LINER  
 IMPLANTOLOGY  
 ENDODONTIC ACCESSORIES  
 MISCELLANEOUS

# HEALDENT

## Anti-microbial & fluoride self-cure liner

Formulation without any addition of TEGDMA, Bis GMA

### FEATURES

- Immediate efficiency due to the Benzalkonium in the product.
- Long lasting effect (Sodium Fluoride).
- Easy to use.
- Use the pure product undiluted. No dental preparation, mixing or photopolymerization needed. Apply and wait 10 seconds before drying with air.

### ACTION MECHANISM

- Benzalkonium Chloride is the antiseptic which rids the tubulis of residual bacteria. These germs are frequently responsible for post-operative hypersensitivities after fillings, especially on anterior teeth. They also enhance painful sensation of teeth with cervical recession or root exposure.
- Sodium fluoride reduces the incidence of root surface caries, remineralizing the dentin, the only way to provide long lasting desensibilization (desensitizer use).



### INDICATIONS

- As a liner (90% of the indications), HEALDENT eliminates the risk of post-operative sensitivities. It is compatible with all bonding agents and restorative materials and actually enhances the adhesion of bonding agents by 1 to 2 Mpa.
- As a desensitizer (5% of the indications), HEALDENT gives immediate pain relief on cervical recessions or root exposures.

### OTHER INDICATIONS

- Before prosthetic sealing on the tooth to avoid the sensitivity due to the acidity of cements during the first 24 hours.
- After tooth bleaching & whitening.
- After scaling, root planning & perio treatments.

### REFERENCES & DESCRIPTION

**D-10** 10ml bottle.

MD : Class IIa certified by TÜV Rheinland (0197).



# HI-SEAL

## Light-cure cavity liner

Formulation without any addition of TEGDMA



### FEATURES

- Compatible with all dental restorative materials or resin cements.
- Releases favorable calcium ions, fluoride ions and phosphate ions. These are known to be beneficial to the tooth structure, to stimulate secondary dentin formation and to have cariostatic properties.
- Very hard after setting and virtually insoluble in water and oral fluids.
- Can be applied directly from the syringe through pre-bent dispenser tips for precised placement or can be dispensed on a pad or mixing well and placed on the tooth with a suitable instrument.
- Dentin shade.
- Radiopaque.

### IMPORTANT NOTICE

- Hi-Seal chemically bonds to adhesive primers, composites and other resin based materials and it micromechanically bonds to dentin.



### REFERENCES & DESCRIPTION

<b>HS-6</b>	Kit of 4 x 1.2 ml (minimum 2g) syringes + 10 needle tips.
<b>IR-100</b>	100 pink needle tips. G18.

MD : Class IIa certified by Tüv Rheinland (0197).

# ELSOTEMP

## Eugenol-free, fluoridated temporary filling cement

### FEATURES

- Because of its unique plasticizer, no expansion will occur during the setting process.
- No pulp or gum irritations (PH=7).
- Fast-setting.
- Waterproof.
- Eugenol-free: does not hinder polymerization of resins and composites.
- Contains fluoride: cariostatic action.
- Soft before setting to allow a perfect application during the filling process.
- Hard after setting.
- Stick to the walls of the tooth: remains in mouth 1 or 2 months, if needed.
- Easy to remove.



### CONSISTENCY

- Grey: soft.
- White: normal.
- Pink: hard.

#### REFERENCES & DESCRIPTION

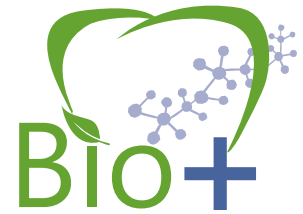
<b>TPS-B</b>	Temporary filling cement, white, 3 x 28g syringes.
<b>TPS-R</b>	Temporary filling cement, pink, 3 x 28g syringes.
<b>TPP-B</b>	Temporary filling cement, white, 6 x 28g jars.
<b>TPP-G</b>	Temporary filling cement, grey, 6 x 28 jars.
<b>TPP-R</b>	Temporary filling cement, pink 6 x 28g jars.
<b>TPP-R1</b>	Temporary filling cement, pink, 1 x 28g jar.
<b>TPP-B1</b>	Temporary filling cement, white, 1 x 28g jar.
<b>TPP-G1</b>	Temporary filling cement, grey, 1 x 28g jar.
<b>D-10</b>	10ml bottle.

MD : Class IIa certified by Tüv Rheinland (0197).

# PROREZ

## Dual-cure composite for temporary filling

Formulation without any addition of HEMA, TEGDMA, Bis GMA



COMPOSITES,  
ETCHING &  
ACCESSORIES

ORE BUILD-UP  
MATERIAL

IMPRESSION

TEMPORARY BRIDGES &  
CROWNS

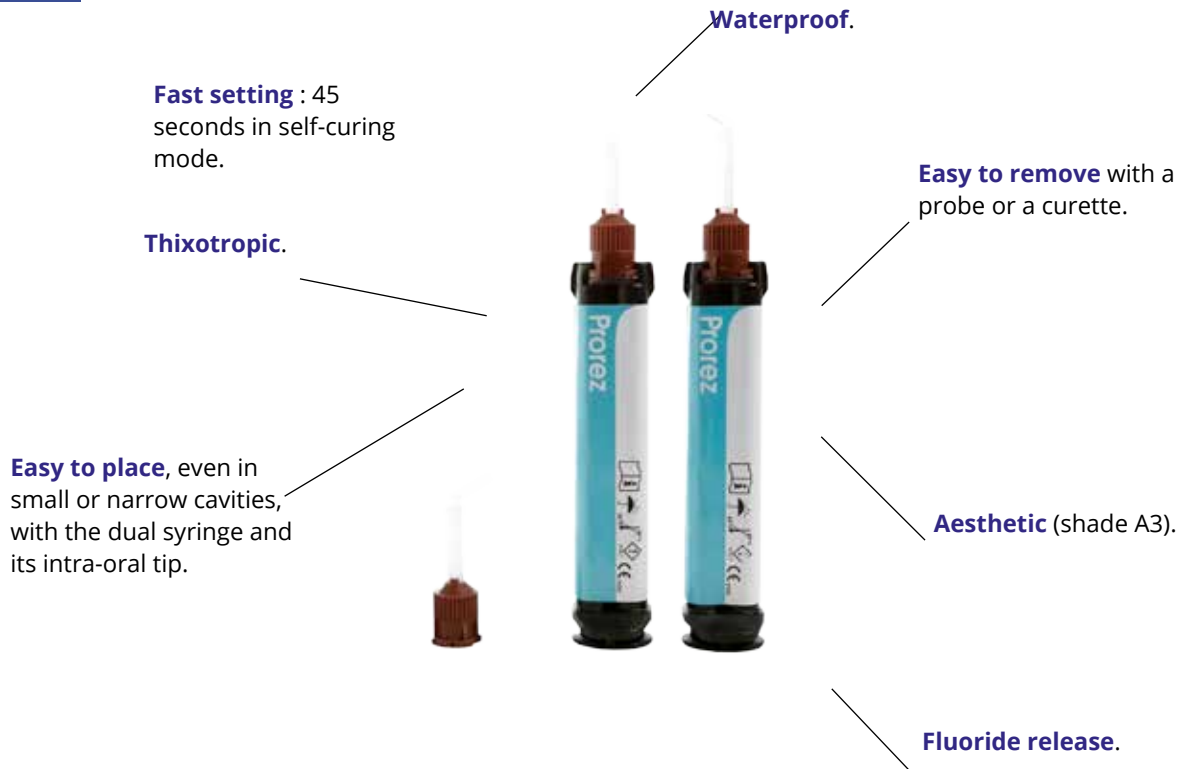
CEMENTS & CAVITY  
LINER

IMPLANTOLOGY

ENDODONTIC  
ACCESSORIES

MISCELLANEOUS

### FEATURES



### INDICATIONS

- Temporary filling for inlay and onlay preparations.
- Temporary filling for implant screw holes.
- Temporary filling for other cavities to be protected (after endodontic treatments...).



### REFERENCES & DESCRIPTION

**PRZ-16** 2 x 5ml dual syringes + 20 mixing tips + 20 regular intra-oral tips.

MD : Class IIa certified by Tüv Rheinland (0197).



# IMPLANTOLOGY

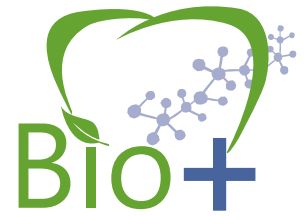
| DUROC CLEAR



# DUROC CLEAR

Dual-cure composite for temporary filling

Formulation without any addition of HEMA, TEGDMA, Bis GMA



## FEATURES

**Translucent shade**, for a better vision of the surgical field.

**Resistant but slightly resilient**, for an easy removal.

**Low exothermicity.**

**Adequate setting time.**

**A new layer can be applied on top of an existing one and stick to it**, to fill the free space between the guide and the "drilled body".



## INDICATIONS

- To make surgical guides directly in the mouth (avoid the need to make an impression and a plaster model for this step).
- Stabilization of SICAT plates (Sirona).
- Bite registration when is unstable.

### REFERENCES & DESCRIPTION

<b>DUCL-50</b>	1 x 50ml cartridge + 10 mixing tips.
<b>EJ-100</b>	100 yellow mixing tips.

MD : Class IIa certified by Tüv Rheinland (0197).

## Making of a surgical guide directly in mouth in a CAD/CAM environment



1- Duroc Clear application.



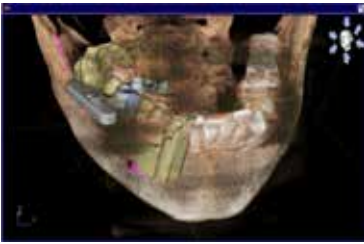
2 - Insertion of the reference body into the resin.



3- Reference body in place.



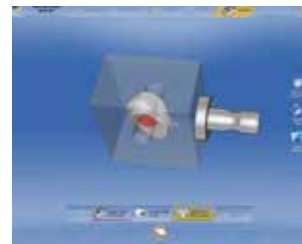
4- System taking off.



5- Detection of the reference body.



6 - Removing the reference body.



7- Machining of the drill body.



8- Drill body machined.



9- Apply the dual self-etching bonding around the drill body and inside the surgical guide.



10 -Assembling of the 2 parts of the surgical guide.



11- Trimming and polishing the surgical guide.



12 - Surgical guide finished.





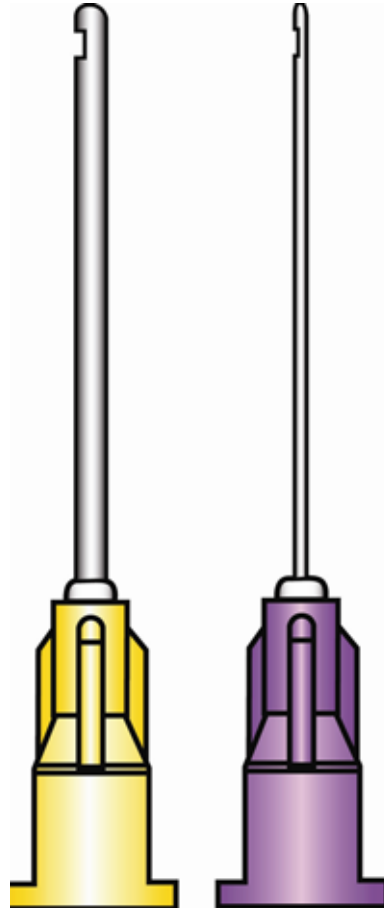
# ENDODONTIC ACCESSORIES

| ENDONEEDLE

# ENDONEEDLE

Canulas for root canal irrigation

Lateral opening and blunt end



## FEATURES

- Compared to needles with apical opening, a needle with lateral opening and blunt end will prevent any risk of damage at the apex of the tooth (acute desmondontitis), especially with a chronically infected tooth (eg.: widely opened apex) or when the apessification is not complete.
- The small diameter of the opening allows enough water pressure to expel the debris from the canal.
- Cleaning root canals without risking a perforation of the apex.



## DESCRIPTION

- 3 diameters available:
  - 0.30mm (purple), for thin canal irrigation.
  - 0.40mm (yellow) for medium-size canal irrigation.
  - 0.60mm (blue), for large canal irrigation (canines and incisives).
- 33 mm length, suitable even for upper maxillary canine.
- Very flexible, to adapt to all canal morphology.

### REFERENCES & DESCRIPTION

<b>ED30-100</b>	Kit of 100 canulas, gauge 30.
<b>ED27-100</b>	Kit of 100 canulas, gauge 27.
<b>ED23-100</b>	Kit of 100 canulas, gauge 23.
<b>ED30-30</b>	Kit of 30 canulas, gauge 30.
<b>ED27-30</b>	Kit of 30 canulas, gauge 27.
<b>ED23-30</b>	Kit of 30 canulas, gauge 23.

MD : Class I.





# MISCELLANEOUS

ULTIMA  
MIXING & INTRA-ORAL  
TIPS  
NOTRE DAM  
PRO 4  
PROLUX

# ULTIMA

Multi-purpose, high performance LED curing light



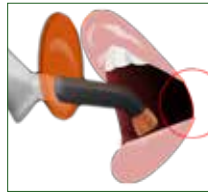
"ALL IN ONE"

## AT THE HEART OF THE INNOVATION

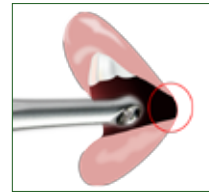
- Advanced mathematics, associated with the latest researches in optical geometry, allowed us to develop this unique lens used for ULTIMA.
- Different operating modes are available : curing mode (composites, cements, brackets, cavity liners) and diagnostic mode (detection of cavities, transillumination).
- Wide emission spectrum to polymerize all materials, with different photo-initiators.
- This lens is composed of mini LED (UV+blue+white) that can be combined together or used alone.

## SPECIALLY DESIGNED

- Easy handling due to an ultra-light weight of around 85g for a total length of 21cm.
- Pen-like aluminum on piece for the optimal comfort of the practitioner.
- Its straight shape facilitates intraoral access in posterior and in anterior, without overstretching the patient's mouth.



Classic curing



ULTIMA LED light

- Two orange silicone eyes shields are provided in the kit. It should be placed on the head of ULTIMA. It has been designed to avoid any slipping during Polymerization.
- The use of aeronautic aluminum gives ULTIMA an amazing drop resistance.
- Water-resistant (IPX4).



## EASY MAINTENANCE

- The ULTIMA design station recharges the battery of the curing light.
- Extra batteries and their dedicated charger can be easily purchased on the internet at a very affordable price.
- **Replace your battery in 10 sec. for 10€. No tool.**





## MULTI-PURPOSE

### POLYMERIZATION | STANDARD MODE

- Polymerization of dual-curing and photo composites and dual-curing cements  
Polymerization depth: ~ 4mm.  
Period: 20 sec. with a beep every 5 sec.

### POLYMERIZATION | BOOST MODE

- Brackets and ceramic veneers bonding (> 2000mW)  
Period: 3 sec.

### POLYMERIZATION | SOFT MODE

#### Half power of standard mode

- Polymerization close to the pulp (composites, dental cavities ).  
Polymerization depth: ~ 2mm (20s).  
Period: 10 sec.
- This low-power mode allows a Polymerization without any excessive heat release, to protect the tooth vitality.

### DIAGNOSIS MODE | LED UV

- Wavelength between 390 and 415nm.
- Visualization of the dental plaque, infected dentin, micro-leakages, old composites restorations and excess resin cements when they contain fluorescent molecules.
- Period: continuing emission during 60 sec. with a beep after 30 sec.

### TRANSILLUMINATION MODE | WHITE LED

- Visualization of cracks depth, fissures and subgingival tartar.
- Period: continuing emission during 60 sec. with a beep after 30 sec.



MISCELLANEOUS

ENDODONTIC  
ACCESSORIES

IMPLANTOLOGY

CIMENTS & CAVITY  
LINER

TEMPORARY BRIDGES &  
CROWNS

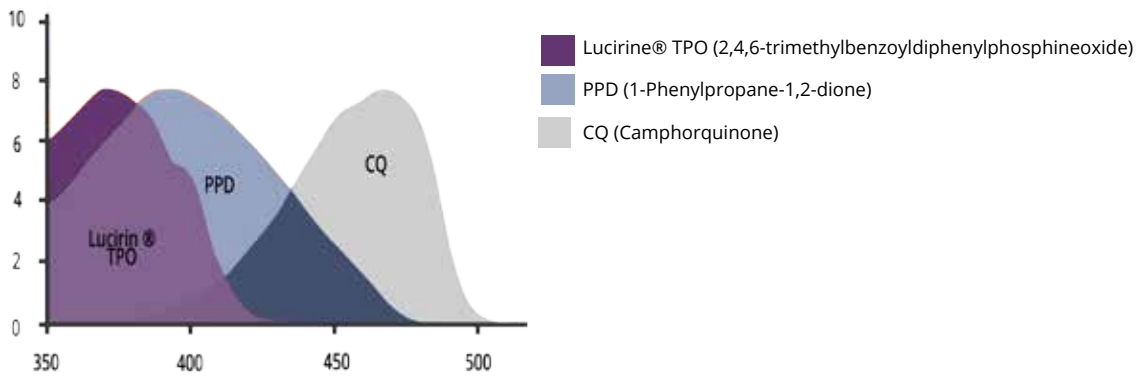
IMPRESSION

ORE BUILD-UP  
MATERIAL

COMPOSITES,  
ETCHING &  
ACCESSORIES

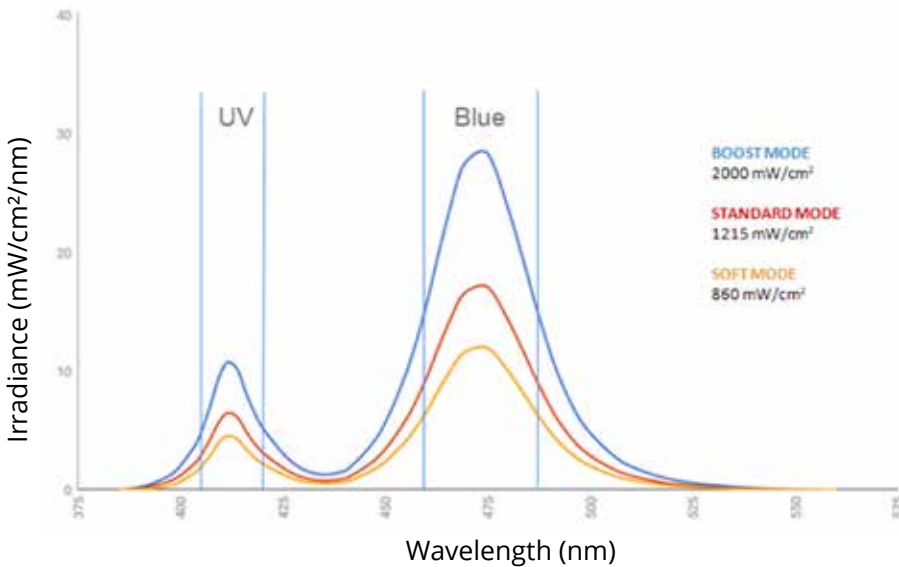
## WIDE ABSORPTION SPECTRUM OF THE MAIN PHOTO-INITIATORS

The Camphorquinone is covered by the blue light spectrum, whereas the TPO, the Lucirine® and the PPD react to the UV spectrum.



## OPTIMAL POLYMERIZATION IN ALL WAVELENGTH

Multiple wavelengths emission to cure any material on the dental market !



Station/charger



Battery charger



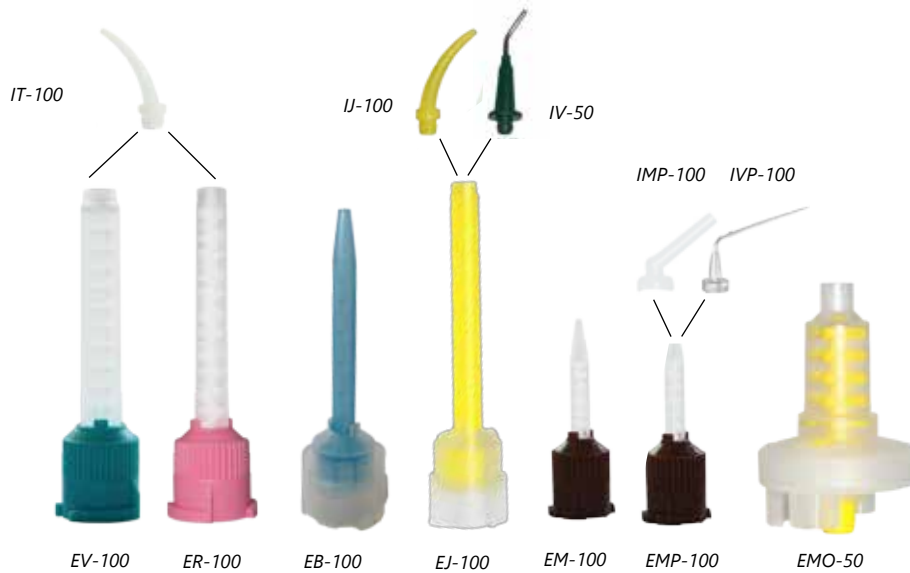
Batteries

## REFERENCES & PRESENTATIONS

<b>ULTI-G</b>	1 pièces à main + 1 base / chargeur + 2 embouts oranges de protection oculaire + 100 gaines de protection jetables. Couleur aluminium.
<b>ULTI-N</b>	1 pièces à main + 1 base / chargeur + 2 embouts oranges de protection oculaire + 100 gaines de protection jetables. Couleur noire mat.
<b>GJ-500</b>	500 protection jetables.
<b>C-BAT</b>	Chargeur de batterie.
<b>BAT-3.7-L</b>	Batterie.

MD : class I.

# MIXING & INTRA-ORAL TIPS



## REFERENCES & DESCRIPTION

<b>EV-100</b>	Green mixing tip for Still Bite (x 100).
<b>ER-100</b>	Pink mixing tip (x 100).
<b>IT-100</b>	Intra-oral tip for ER-100 and EV-100 (x 100)..
<b>EJ-100</b>	Yellow mixing tip for Harmony, Autocore Mix , Core D, Phoenix MD and Duroc (x 100).
<b>IJ-100</b>	Intra-oral tip for EJ-100 (x 100).
<b>IV-50</b>	Intra-oral tip metal for EJ-100 100 (x 50).
<b>EB-100</b>	Blue mixing tip for Phoenix (x 100).
<b>EM-100</b>	Brown mixing tip, for CP30, Solid, Seal Temp and Seal Temp S dual (x 100).
<b>EMP-100</b>	Brown tip (x 100).
<b>EVP-100</b>	Purple mixing tip, long and flat. (x 100).
<b>IMP-100</b>	Intra-oral tip for EMP-* (x 100).
<b>IVP-100</b>	Intra-oral mixing tip, for brown mixing tip (EMP-50) or purple (EVP-50). (x 100).
<b>EMO-50</b>	Yellow mixing tips for automatic mixers (x 50).
<b>IR-100</b>	Intra-oral pink tip for Hi Seal and Cirus Flow (x 100). G18.
<b>LTL</b>	Intra-oral black tip for Hemosal, G Etch (Jumbo kits), Notre Dam and Opaq (x 100) G20..
<b>ETL</b>	Intra-oral blue tip for G Etch (minikit) and PF Seal (x 100) G25.

MD : Class I.



LTL-100



IR-100



ETL-100

# NOTRE DAM

## Multipurpose light-cure liquid dam

Formulation without any addition of HEMA, TEGDMA, Bis GMA



### FEATURES

**Excellent thixotropy** for an easy setting of the material.

**Low exothermic reaction** to avoid harmful reaction of the mucosa.

**Versatile in use.**

**Blue** for a good contrast.

MD : Class I.



1 - To built temporary tooth walls.



2 - To ensure a waterproof joint between the tooth and the rubber dam.



4 - Gum protection during bleaching sessions at the chair.

### INDICATIONS

- **Bleaching**
  - Protection of soft tissues during bleaching process.
- **Endodontic**
  - To insure a waterproof joint of the rubber dam around a tooth during an endodontic session.
  - To build temporary tooth walls during endodontic sessions, to hold the irrigating liquid in place.
- **Prosthodontic**
  - To fill up undercuts before impression, to avoid tearing off the material.
- **Restorative dentistry**
  - To hold Teflon® film in place when luting aesthetic veneers, or making a class II composite involving the contact point.

### REFERENCES & DESCRIPTION

<b>ND- 4</b>	2 x 1,2ml syringes + 10 black applicator tips. Blue shade.
<b>LTL</b>	100 black needle tips. Gauge 20.

MD : Class IIa certified by Tüv Rheinland (0197).

# PRO 4

## Multi-purpose prosthodontic introduction kit



### FEATURES

- A multi-purpose kit concept dedicated to prosthodontic sessions, with four products presented in 10ml syringe, mixing tips and a gun.
- Ergonomic: time saving with a light and handy unmatched dispensing system + syringe.
  - 10 ml syringes for better visibility of the operative field.
  - Small dispensing guns easy to handle.
- Economical: the small mixing tips allow practioners to save 40 to 50% of product, compared to mixing tips used for 25 or 50ml cartridges.
- One gun for the different products presented in identical 10ml dual syringes.



### CHARACTERISTICS

This ergonomic kit contains:

- 1x10 ml syringe of CORE D, core build up material.
- 1x10 ml HARMONY medium viscosity, impression material.
- 1x10 ml HARMONY light viscosity, fast setting, impression material.
- 1x10 ml SEAL TEMP S, resin based temporary cement.
- 1 dedicated dispensing gun.
- Mixing tips and intra-oral mixing tips.

## PRODUCTS FEATURES & INDICATIONS

### HARMONY MEDIUM and LIGHT FAST

- HARMONY has been specially developed to provide an excellent hydrocompatibility. This feature allows HARMONY to be efficient, even deep in the sulcus.
- Perfect thixotropy: HARMONY does not flow away when it is applied.
- Unlike many other impression materials, an impression made with HARMONY has a mat appearance which allows a perfect and fast reading.
- Ideal for the "one step" impression procedure (for medium viscosity) and for the "wash technique" or 2-steps for light viscosity.



### SEAL TEMP S

- Rapid and complete periodontic healing (in 2 to 3 days only), due to the smooth surface of the joint.
- Time saving. It permanently sticks to the intrados of the temporary crowns:
  - The prepared teeth always remain clean.
  - Simply apply a fresh layer of cement into the crowns before putting them back into the teeth, without taking off the old layer of cement.
- Can also be used on living teeth.
- Sealing of temporary crowns with a medium retention strength, for normal temporary bridge & crown cases.
- Ideal for semi-final cementation on implant (the crown can be moved, if wanted).

### CORE D dentin shade

- Its very good thixotropy allows the material not to flow but to remain in place without the need for a matrix. This dramatically improves the vision of the operating field.
- Cuts like dentin. There is no different sensation when the bur moves from the material to the tooth structures.
- As strong as the dentin.
- Aesthetic bridges, made from a pre-impression.



### And more...

Other products of ELSODENT brand are available in 10 ml syringes and can be used with the tips and the small gun of the kit: **HARMONY LIGHT** (HLN-20 - normal), **SEAL TEMP** (ref. STD-32), **CORE D** white shade (réf. CDB-10), and **INNOCEM** (réf. IC-20-OA2, opaque A2, IC-20-OA3, opaque A3, IC-20-TA2, translucent A2).



## KIT

### REFERENCES & PRESENTATIONS

**PRO 4** 10 ml HARMONY medium + 10 ml SEAL TEMP S + 10 ml CORE D Dentin shade + 10ml HARMONY LIGHT FAST + 40 mixing tips+ 30 regular intra-oral tips + 10 thin intra-oral tips + 1 GUN-10.

## REFILLS

### REFERENCES & PRESENTATIONS

<b>HM-40</b>	4 x 10ml HARMONY medium + 10 mixing tips + 10 thin intra-oral tips.
<b>HLF-40</b>	4 x 10ml HARMONY low viscosity (fast setting) + 10 mixing tips + 10 thin intra-oral tips.
<b>STDS-32</b>	2 x 10ml SEAL TEMP S + 10 mixing tips
<b>CDD-10</b>	1 x 10ml CORE D dentin shade + 10 mixing tips + 10 regular intra-oral tips.
<b>DU-20</b>	2 x 10ml DUROC + 10 mixing tips.
<b>EVP-50</b>	Purple mixing tips, long and flat (x50).
<b>EMP-50</b>	Brown tips (x50).
<b>IMP-100</b>	Intra-oral tips (x100).
<b>IVP-100</b>	intra-oral mixing tips, for brown mixing tips (EMP-50) or purple (EVP-50)(, x100).
<b>G-10</b>	Gun for 10ml syringe.

# PROLUX

A multi-purpose, intra-oral, lighting system

## FEATURES

- Relax patient's muscles, keeping the mouth open.
- Move the tongue back, away from the working area.
- Provides a powerful and intense light on the working area.
- Small and easy to put in place.
- No wires.
- Induction recharge.



## USES

- Multiple restorations.
- Complicated tooth extractions.
- Endo work (removing of broken post, etc).
- Orthodontic treatments.
- Implantology.



## REFERENCES & PRESENTATIONS

<b>PRO</b>	1 induction charger + 1 light unit + 2 autoclavable silicone sockets (1 small, 1 big) + 100 disposable protection sleeves.
<b>MSP-2</b>	Silicone socket, small, by 2.
<b>MSG-2</b>	Silicone sockets, large, by 2.
<b>GJ-500</b>	500 disposable sleeves.

MD: Class 1

## DESCRIPTION

- Remove the PROLUX from the charger/base.
- Choose the proper size for the silicone socket to fit in the patient's mouth. Introduce the PROLUX + disposable sleeve into the silicone bite.
- Put the system into the mouth, between the teeth, on the other side of the working area.



## LIGHT UNIT

- 2 hours 15 minutes autonomy.
- Recharging time: max. 2 hours.
- Waterproof for cold sterilisation.
- Touch sense on/off button.
- Light intensity: 1200mW.
- LED lifetime: 50 000 hours.



## CHARGER

- Very small and well designed.
- Direct connection to the wall.



# ELSODENT AROUND THE WORLD



Elsodent is present in France and in many countries : most European countries such as Belgium, Netherlands, Great Britain, Spain, Sweden, Ireland, Germany, Bulgaria, Croatia, Turkey, Greece etc. as well as in Algeria, Marocco, Tunisia, Indonesia, North Africa, Middle East, Turkey, South East Asia or China ...





**LABORATOIRE ELSODENT**

35 av. du Gros Chêne | BP50072 HERBLAY | 95612 CERGY-PONTOISE CEDEX  
Tél : +33 1 30 37 75 75 | Fax : +33 1 34 40 07 04 | Email : [elsodent@elsodent.com](mailto:elsodent@elsodent.com)

[www.elsodent.com](http://www.elsodent.com) - [www.elsodent.co.uk](http://www.elsodent.co.uk)

CTGEN-01 EN mar-19