



CHEESE II



TOTAL DENTAL SOLUTION

New generation dental diode laser - Built on years of experience

ADD: 5, 6/F, Unit A, B, Building B8, Hi-Tech Medical Device Industrial Park,
#818 Gaoxin Avenue, East Lake Development Zone, Wuhan 430206, China
Ph: 86-27-67848871 67848872 Fax: 86-27-67848873
<http://www.gigaalaser.com> Email: info@gigaalaser.com

NEW Dental Diode Laser Systems



GIGAA LASER launch its second generation dental laser CHEESEII for the dental market in May, 2015, the max output power is 7w, 810nm or 10w, 940nm/ 980nm, there is a big color touch screen, wireless foot switch and customizable pre-setting protocols. As it is becoming more competitive in the dental laser market, our new CHEESEII laser system will offer our partners, dentists and hygienists an effective but affordable unit for their practice.



7 inch touch screen



Wireless foot switch



Max output power 10w

Clinical Applications

A. Periodontal Therapy

- Gingivitis-2W
- Periodontitis - Pulse, 500/500ms, 1-2.5W
- Operculectomy - CW, 3-3.5W
- Frenectomy - CW, 2-2.5W
- Gingivectomy - CW, 1.5-2W

B. Endodontics

- Root canal sterilization- CW, 1W
- Periapical abscess- CW 1.2-1.5W
- Caries-Pulse 1.2W, 500/500ms
- Desensitization- Pulse, 30/30ms, 3W
- Laser analgesia,-CW, 2W

C. Oral surgery

- Soft tissue excision-2W
- Ablation-2.5W
- Implant exposure-CW, 2-3W
- Peri-implantitis-2W
- Apthae and herpes- 1.5W

D. Aesthetic procedures

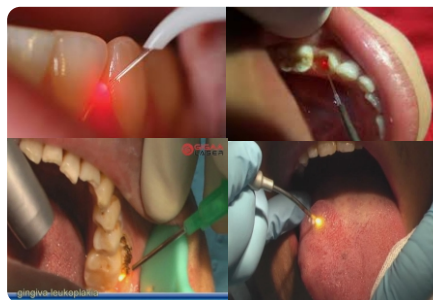
- Bleaching - CW, 1.5-3W
- Depigmentation - CW, 2-3.5W
- Gummy smile correction -2W
- Apthae and herpes, CW, 1.5-2W
- Crown lengthening, CW, 1.5W

E. Biostimulation

- Teeth desensitization -Pulse, 30/30ms, 0.5-5W
- Post extraction-0.8W
- TMJ -0.8W
- Haemostats-CW, 0.8-1.5W
- Leukoplakia-2W

Soft Tissue Surgery

The most precise control of tissue cutting can use for different procedures and tissue biotypes. It cuts soft tissue clean, with more hemostasis and supreme patient comfort.



Tooth Whitening

An ideal teeth-whitening solution for progressive offices which it's wants to expand their cosmetic treatment menu. Bleaching gel applied act as an isolator will have better performance.

Pain Therapy

Using Deep Tissue Therapy Handpiece can ease discomforts such as Anti-Inflammation, Anti-Pain, Accelerated Tissue Repair and Cell Growth.



Copyright ©GIGAA LASER, 2015. All rights reserved.
Designated trademarks and brands are the property of their respective owners.
Images, specifications and other product data are subject to change without notice.